



Closed Onward Chain Right Choice Estate Agents are delighted to offer to the market this four bedroom detached family home in the popular area of Chineham.

The ground floor benefits from an entrance hallway, refitted kitchen, lounge-dining room, utility room and w/c.

The first floor offers four bedrooms with the master benefiting from an en-suite shower room and a family bathroom.

Additional features include gas central heating, double glazing, private enclosed rear garden, a boarded loft room with velux windows, a partly converted garage and driveway parking.

Location: Chineham is located to the north of Basingstoke and offers fantastic local schools and shops along with regular bus links into the town centre. Commuting routes are also a benefit with the M3 & A33 within a short drive.


Tenure: Freehold

Local Authority: Basingstoke & Deane Borough Council - Band D

Viewing Details: Strictly by appointment only. Please Contact Right Choice Estate Agents

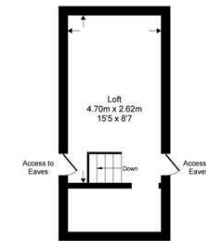




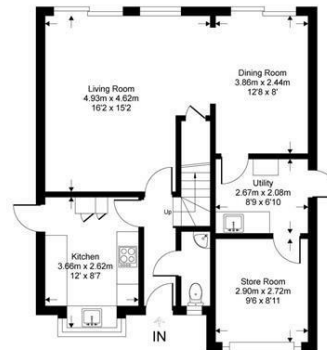
Energy Efficiency Rating		
	Current	Potential
<i>Very energy efficient - lower running costs</i>		
(92 plus) A		83
(81-91) B		
(69-80) C		
(55-68) D	71	
(39-54) E		
(21-38) F		
(1-20) G		
<i>Not energy efficient - higher running costs</i>		
England & Wales	EU Directive 2002/91/EC	

Longstock Close

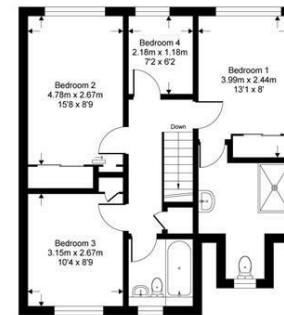
Approximate Gross Internal Area = 126.7 sq m / 1364 sq ft
 Approximate Outbuilding Internal Area = 7.5 sq m / 81 sq ft
 Approximate Total Internal Area = 134.2 sq m / 1445 sq ft



Loft Floor = 55.6 sqm / 599 sqft



Ground Floor = 55.1 sqm / 594 sqft



First Floor = 55.6 sqm / 599 sqft

Whilst every attempt has been made to ensure the accuracy of the floor plan contained here, measurements of doors, windows, rooms and any other items are approximate and no responsibility is taken for any error, omission or mis-statement. This plan is for illustrative purposes only and should be used as such by any prospective purchaser.



We endeavour to make our sales particulars accurate and reliable, however, they do not constitute or form part of an offer or any contract and none is to be relied upon as statements of representation or fact. Any services, systems and appliances listed in this specification have not been tested by us and no guarantee as to their operating ability or efficiency is given. All measurements have been taken as a guide to prospective buyers only, and are not precise. It is the responsibility of your appointed legal representative to ensure all relevant documentation is present and the property is suitable for purchase. If you require clarification or further information on any points, please contact us, especially if you are travelling some distance to view. Fixtures and fittings other than those mentioned are to be agreed with the seller by separate negotiation. Right Choice Estate Agents is a trading name of Right Property Choice Limited, 72 Beecham Berry, Basingstoke, Hampshire, England, RG224QN, Registered No: 14505100