



Right Choice Estate Agents are delighted to offer to the market with NO ONWARD CHAIN this Park Home in the popular Attwood Close. The property offers an entry hall, living room, kitchen, two bedrooms and a shower room. Additional features include a private rear garden, front veranda, large storage shed, car port and additional driveway parking.

Location: Attwood Close is located on the outskirts of Basingstoke Town Centre, close to schools and other amenities, shops, takeaways and parks with convenient access to the M3.

Tenure: Leasehold

Service and maintenance charge £150 pcm to include water

Years remaining on lease n/a

Local Authority: Basingstoke & Deane Borough Council - Band A

Viewing Details: Strictly by appointment only. Please Contact Right Choice Estate Agents

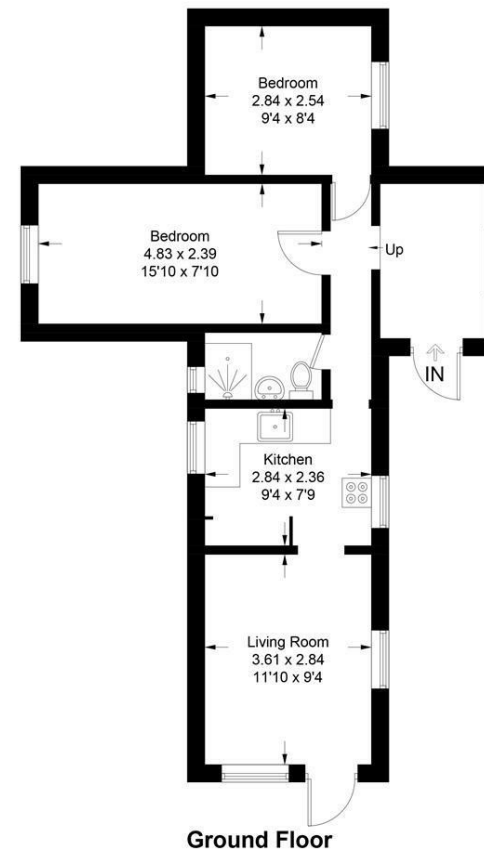




Energy Efficiency Rating		
	Current	Potential
Very energy efficient - lower running costs		
(92 plus) A		
(81-91) B		
(69-80) C		
(55-68) D		
(39-54) E		
(21-38) F		
(1-20) G		
Not energy efficient - higher running costs		
England & Wales <small>EU Directive 2002/91/EC</small>		

Attwood Close

Approximate Gross Internal Area = 48.3 sq m / 520 sq ft



Ground Floor

Illustration for identification purposes only, measurements are approximate, not to scale. floorplansUsketch.com © (ID1115491)



We endeavour to make our sales particulars accurate and reliable, however, they do not constitute or form part of an offer or any contract and none is to be relied upon as statements of representation or fact. Any services, systems and appliances listed in this specification have not been tested by us and no guarantee as to their operating ability or efficiency is given. All measurements have been taken as a guide to prospective buyers only, and are not precise. It is the responsibility of your appointed legal representative to ensure all relevant documentation is present and the property is suitable for purchase. If you require clarification or further information on any points, please contact us, especially if you are travelling some distance to view. Fixtures and fittings other than those mentioned are to be agreed with the seller by separate negotiation.

Right Choice Estate Agents is a trading name of Right Property Choice Limited. 72 Beecham Berrv. Basinstoke. Hampshire. England. RG224QN. Registered No: 14505100